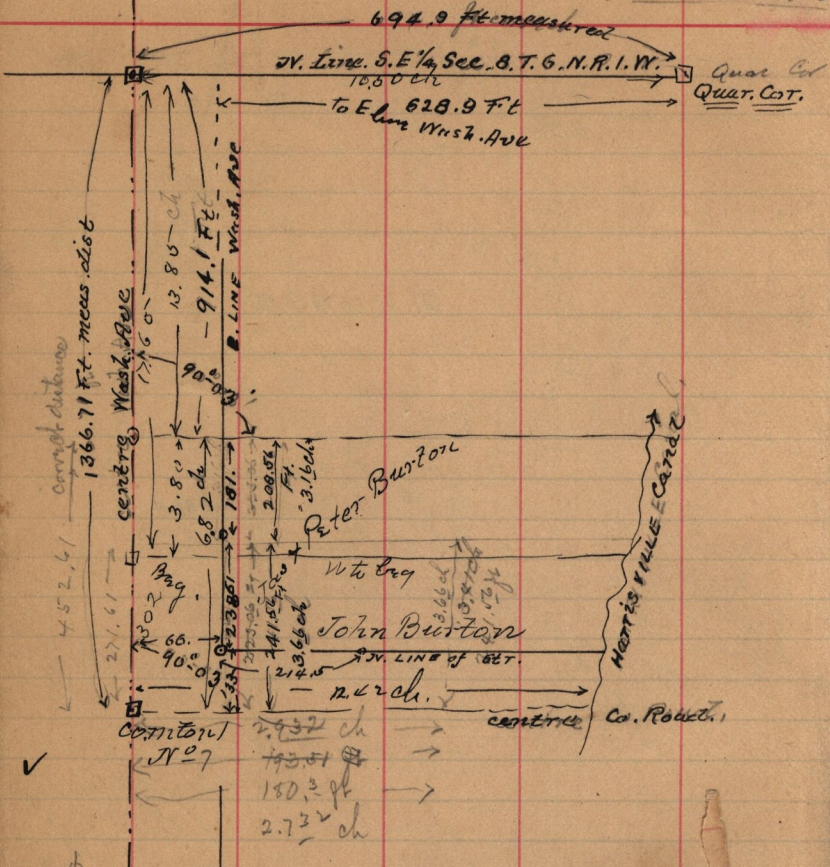


June 26-1892 - Survey made for Jas. & Peter Burton
J. Baird Chairman



Description. deed from Anne J. Shurtleff to James & Peter Burton
Pt S.E. 1/4 Sec 8. & Pt S.W. 1/4 Sec 9. T. 6. N. R. 1. W. Beg. 13.85 ch S.
and 10.50 ch W. of N.E. cor S E 1/4 Sec 8. - S. 6.83 E 12.43 ch to
cut. Harrisville Canal. N. in canal to pt E. of bay. N. 12.43
to bay. 8.52 a Book Y - page 71

Dec. 1-1893. Copies, des. made. of above land. to James Burton, Beg

at apt on E. Line Wash. Ave. 628.9 ft W and 914.1 to F 65. of N.E. Cor
of said 1/4 Sec. 5101. Ft. on E. line sd. Ave. S. 753.72 Ft to cent. of Harris
Canal. Northerly along channel of canal to pt E. of beg. thence
W 753.72 Ft to bay. - to Michael Perouse, Beg. at pt on E. L.
Wash. Ave. 628.9 Ft W. of 1095.1 Ft S. of N.E. Cor. sd. 1/4 Sec. S 237.
E line sd. Ave. & N line of St. Francis & 1/4 Sec. 5 of line of N. 44.